



GENERAL INFORMATION

<b>Metal</b>	<i>Métal</i>	Platinum	
<b>Condition</b>	<i>État</i>	Very good	<i>Très bon</i>
<b>Hallmark</b>	<i>Poinçon</i>	PLATIN	

GEMSTONES

<b>Central gemstone</b>	<i>Gemme</i>	NATURAL DIAMOND	<i>DIAMANT NATUREL</i>
Quantity	<i>Quantité</i>	3	
Cut	<i>Taille</i>	Round brilliant	
Estimated total weight	<i>Poids total estimé</i>	1.30ct approx.	
Colour	<i>Couleur</i>	G to I	
Clarity	<i>Pureté</i>	VS1 to SI1	
<b>Other Gemstones</b>	<i>Entourage</i>	NATURAL DIAMONDS	<i>DIAMANTS NATURELS</i>
Quantity	<i>Quantité</i>	26	
Cut	<i>Taille</i>	Single	
Estimated total weight	<i>Poids total estimé</i>	0.80ct approx.	
Colour	<i>Couleur</i>	G to I	
Clarity	<i>Pureté</i>	VS2 to SI2	



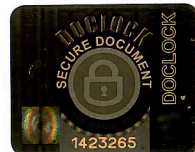
NOT ACTUAL SIZE

DESCRIPTION :

Total weight: 5.88g

Platinum ring set with natural round and single cut diamonds with an approximate total carat weight of 2.10ct (G to I; VS1 to SI2)

SCAN & SHARE :



THIS DOCUMENT IS NOT A GEMMOLOGICAL REPORT; IT REFERS ONLY TO THE GLOBAL CHARACTERISTICS OF THE JEWEL. INDICATIONS OF WEIGHT, DIMENSIONS, CLARITY AND COLOUR OF GEMSTONES ARE ESTIMATED. THE INFORMATIONS CONTAINED IN THE REPORT ARE THE RESULT OF TESTING THE JEWEL DESCRIBED ABOVE, AT THE TIME OF EXAMINATION AND BASED ON ACCEPTED GEMMOLOGICAL INSTRUMENTATION AND METHODS. THE PRESENCE OR ABSENCE OF TREATMENT IS INDICATED (WHENEVER POSSIBLE), BUT THE INSCRIPTION: "NO INDICATIONS OF TREATMENT" DOES NOT IMPLY THAT NO TREATMENT MAY HAVE BEEN MADE BUT IT MEANS THAT NONE OF THEM WAS DETECTED. "NATURAL" REFERS TO THE DEFINITION MADE BY CIBJO IN THE GEMSTONE BOOK 4.1 AND 4.1.3.1 ONLY. THE COMPANY SHALL NOT BE LIABLE FOR ANY DIFFERENCES RESULTING FROM THE TESTING OF THE GOODS BY ANOTHER PARTY. © GEM ROAD LTD

ALEXANDER DUFFY  
FGA, DGA, BSC (HONS)

CAMILLE PERRIN  
ING, EG, MA